



Timber

Mississippi Timber

19.7 MILLION ACRES OF FORESTLAND



RICH HISTORY

Since the early 1900's Mississippi has been a leader in the timber industry. Gulfport Mississippi exported more Southern Yellow Pine logs that any port in the World. **Excellent Forest Management has grown our Forests to some of the most desirable forests in the World today.**



WOODBASKET:

Mississippi has approximately **19.7 Million acres of Timberland**; 65% of our state is covered in Forest land. We are Business Friendly! Mississippi was the first state in the nation to establish a reforestation tax credit!



CERTIFIED TREE FARMERS:

Mississippi is ranked Number 1 in the nation for Certified Tree Farmers under the American Tree Farm System.
77% of our Forestland is Privately Owned.



SUSTAINABILITY:

We plant more than we grow! Mississippi is rich in Softwood and Hardwood timber.
Average Pine Growth to harvest: 3:1
Average Hardwood Growth to harvest 6:1



LOGGING:

Mississippi has nearly 1,000. Qualified Professional Logging Companies
Being a PLM Qualified Logger means they are trained to meet Sustainable Forestry Initiative (SFI) Standards.

Mississippi Timber

Working Forests and Innovative Products

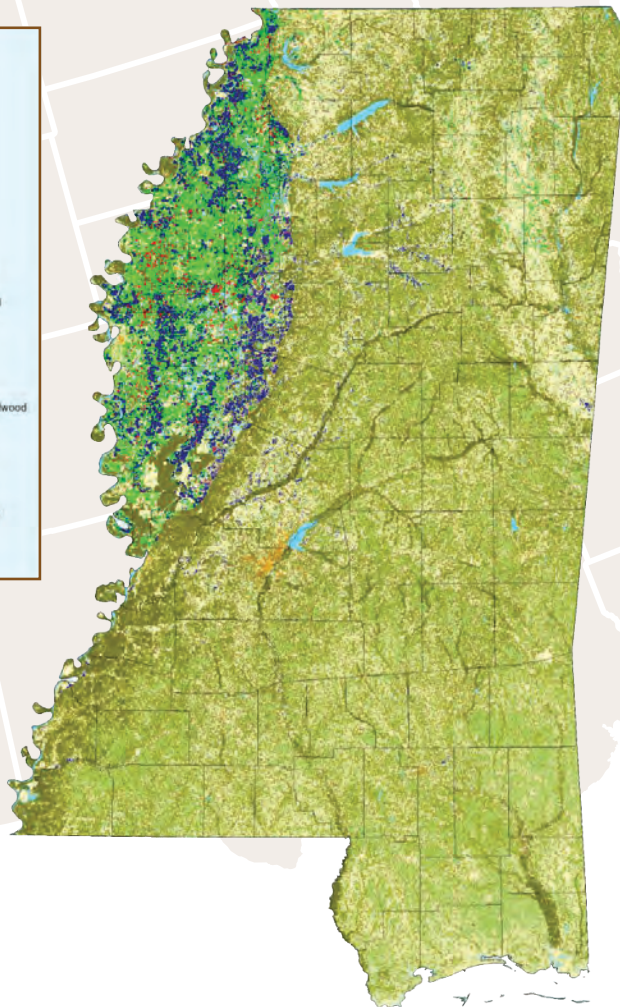
PRIVATE FORESTS IN MISSISSIPPI

Private Acres: **17,153,085**

Jobs: **47,117**

Payroll: **\$1,792,349,919**

Sales & Manufacturing: **\$8,514,299,267**



Public and private acreage data comes from the U.S. Forest Service's most recent Forest Inventory and Analysis (FIA). Jobs, payroll and sales refer to the direct, indirect and induced impacts. For more information refer to The Economic Impact of Privately-Owned Forests in the United States.

WORKING FORESTS: MISSISSIPPI'S 1ST CONGRESSIONAL DISTRICT

FOREST OWNERSHIP IN MISSISSIPPI'S 1ST DISTRICT



PRIVATELY OWNED FORESTS IN MISSISSIPPI'S 1ST DISTRICT SUPPORT:



10,323
JOBS



\$392,667,752
PAYROLL



\$1,865,358,915
SALES & MANUFACTURING

WORKING FORESTS: MISSISSIPPI'S 2ND CONGRESSIONAL DISTRICT

FOREST OWNERSHIP IN MISSISSIPPI'S 2ND DISTRICT



PRIVATE
4,646,284 (93.3%)

PUBLIC
331,072 (6.7%)

PRIVATELY OWNED FORESTS IN MISSISSIPPI'S 2ND DISTRICT SUPPORT:



12,763
JOBS



\$485,496,734
PAYROLL



\$2,306,282,074
SALES & MANUFACTURING

WORKING FORESTS: MISSISSIPPI'S 3RD CONGRESSIONAL DISTRICT

FOREST OWNERSHIP IN MISSISSIPPI'S 3RD DISTRICT



PRIVATE
5,631,474 (92.1%)

PUBLIC
486,289 (7.9%)

PRIVATELY OWNED FORESTS IN MISSISSIPPI'S 3RD DISTRICT SUPPORT:



15,469
JOBS



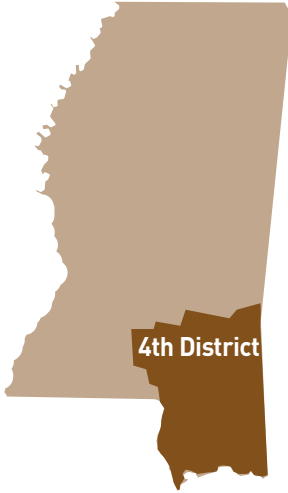
\$588,440,620
PAYROLL



\$2,795,302,125
SALES & MANUFACTURING

WORKING FORESTS: MISSISSIPPI'S 4TH CONGRESSIONAL DISTRICT

FOREST OWNERSHIP IN MISSISSIPPI'S 4TH DISTRICT



PRIVATE
3,111,336 (80.3%)

PUBLIC
764,789 (19.7%)

PRIVATELY OWNED FORESTS IN MISSISSIPPI'S 4TH DISTRICT SUPPORT:



8,563
JOBS



\$325,734,813
PAYROLL



\$1,547,356,153
SALES & MANUFACTURING

We welcome you to Mississippi, The Hospitality State! We are open for Wood-Centric Businesses to locate or expand in Mississippi – we are a Business-Friendly State with much to offer. Our Timber resources are second to none. Quite simply, we grow more timber than we harvest.

Mississippi is the crossroads of the South offering access to the world! We are bordered on the West by the Mississippi River, on the East we have the Tenn-Tom Waterway and we are crisscrossed statewide by Railways and Highways; to the South we are bordered by the Gulf of Mexico with Multiple Ports.

The Mississippi Department of Agriculture and Commerce thanks you for considering Mississippi for all of your Timber needs. We are here to serve you.

**For More Information:
Contact - Ginger Williamson
MDAC - 601-594-9496
Email - Ginger@mdac.ms.gov**

**Mississippi Department of Agriculture and Commerce
Commissioner Andy Gipson**