

MISSISSIPPI DEPARTMENT OF
**AGRICULTURE
& COMMERCE**
2019 ANNUAL REPORT



**MISSISSIPPI DEPARTMENT
OF AGRICULTURE AND
COMMERCE**

121 North Jefferson Street
Jackson, MS 39201
601-359-1100

**BUREAU OF PLANT
INDUSTRY**

705 Stone Blvd
Mississippi State, MS 39762
662-325-3390

**MISSISSIPPI FARMERS
MARKET**

929 High Street
Jackson, MS 39202
601-354-6573

**MISSISSIPPI AGRICULTURE
& FORESTRY MUSEUM**

1150 Lakeland Drive
Jackson, MS 39216
601-432-4500

REGULATORY SERVICES

601-359-1111

WEBSITE

www.mdac.ms.gov

EMAIL

webmaster@mdac.ms.gov

SOCIAL MEDIA



COVER PHOTO CREDIT:
Adobe Stock Photo

MISSISSIPPI AG FACTS

PRODUCTION VALUE
\$7.7 BILLION FOR 2018

FARMS
34,700 IN MISSISSIPPI

ACREAGE
**10.4 MILLION FARM ACRES IN
MISSISSIPPI**

CATFISH
**34,700 WATER ACRES IN
MISSISSIPPI**

FOREST
**19.7 MILLION FOREST ACRES IN
MISSISSIPPI**

NATIONALLY
**MISSISSIPPI RANKS IN THE TOP 20
IN PRODUCTION OF 13 COMMODITIES**

WORKFORCE
**29% OF THE STATE'S WORKFORCE
IS EMPLOYED IN JOBS RELATED
DIRECTLY OR INDIRECTLY TO
AGRICULTURE**

**SOURCE: MISSISSIPPI STATE
UNIVERSITY**

MISSISSIPPI TOP 10

Mississippi's top commodities, based on cash receipts



1. Broilers & Eggs

The value of poultry (broilers and eggs) produced in Mississippi in 2018 was \$2.99 billion. Mississippi ranks #5 in the U.S. in broiler production.



6. Cattle

The value of production of cattle in 2018 was \$305 million. Mississippi had 930,000 head of cattle on 15,940 farms.



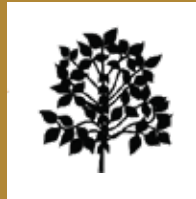
2. Forestry

The value of forestry products produced in Mississippi in 2018 was \$1.25 billion. Mississippi ranks #3 in the U.S. in pulpwood production.



7. Catfish

The value of catfish produced in Mississippi in 2018 was \$164 million. Mississippi ranks #1 in the U.S. in farm-raised catfish production



3. Soybeans

The value of soybeans produced in Mississippi in 2018 was \$1.06 billion. Mississippi ranks #12 in the U.S. in soybean production.



8. Sweet Potatoes

The value of production of sweet potatoes in 2018 was \$118 million. Mississippi ranks #3 in the U.S. in sweet potato production.



4. Cotton

The value of cotton production in 2018 was \$623 million. Mississippi ranks #3 in the United States in cotton and cottonseed production.



9. Rice

The value of rice produced in Mississippi in 2018 was \$117 million. Mississippi ranks #6 in the U.S. in rice production.



5. Corn

The value of production of corn in 2018 was \$351 million. Mississippi produced \$86 million bushels of corn on 2,022 farms.



10. Hay

The value of hay produced in Mississippi in 2018 was \$106 million. Mississippi harvested 590,000 acres producing 1.18 million tons of hay.

SOURCE: MISSISSIPPI STATE UNIVERSITY

TABLE OF CONTENTS

01	-----	Message from The Commissioner
02	-----	Executive Summary
04	-----	Agency Overview
05	-----	Market Development
11	-----	Mississippi Farmers Market
12	-----	County Correspondents Program
13	-----	Timber Commerce
14	-----	Agriculture and Livestock Theft Bureau
16	-----	Mississippi Agriculture and Forestry Museum
21	-----	Bureau of Plant Industry
28	-----	Regulatory Services
29	-----	Consumer Protection
32	-----	Federal and State Inspection Program
34	-----	Petroleum Products Inspection
36	-----	Meat Inspection
38	-----	Weights and Measures
40	-----	Metrology Lab
41	-----	Information Management
44	-----	Revenues and Expenditures

MESSAGE FROM THE COMMISSIONER

ANDY GIPSON

It is with great enthusiasm that I present you with the 2019 Annual Report of the Mississippi Department of Agriculture and Commerce (MDAC). This report provides an overview of the many services and programs offered by MDAC, in addition to highlighting our accomplishments during fiscal year 2019. The Department plays a role in the lives of all Mississippians, not just those involved directly in agriculture. From ensuring the food on your table is safe to ensuring that you are getting what you pay for at the gas pump, the dedicated staff at the Mississippi Department of Agriculture and Commerce is working hard for all Mississippians to ensure fairness and equity in the marketplace.

I am proud of the Department's accomplishments including several new initiatives that were implemented. Genuine MS, our state branding program, was launched to promote the great things grown, raised, crafted, and made right here in Mississippi. The newly-established County Correspondents Program was developed to strengthen communication between the Department and farmers, ranchers, and landowners across all 82 counties in Mississippi. Forestry and Timber Development was created to assist with developing domestic and international markets for the state's timber industry.

At the Department, we continually strive to build upon the strong foundation of Mississippi agriculture, and we are actively exploring ways to further strengthen agriculture from increasing international trade opportunities to working with our federal partners on regulatory reform.

You can learn more about your Mississippi Department of Agriculture and Commerce online at www.mdac.ms.gov and through our social media.

Sincerely,



Andy Gipson, Commissioner



In addition to overseeing the responsibilities of the Department, duties of the Commissioner of Agriculture include leadership through services on the following boards:

- Chairman, Mississippi Fair Commission
- Mississippi Board of Animal Health
- Mississippi Central Farmers' Market Board
- Chairman, Mississippi Hemp Cultivation Task Force
- Mississippi Department of Environmental Quality Permit Board
- Mississippi Land, Water, and Timber Resources Board
- Mississippi Egg Marketing Board
- Southern U.S. Trade Association
- State Seed Board
- State Soil & Water Conservation Committee

EXECUTIVE SUMMARY

The responsibilities of the Mississippi Department of Agriculture and Commerce (MDAC) are multifaceted. The mission of MDAC is to promote and regulate agricultural-related businesses within the state and to promote Mississippi's products throughout the state and the rest of the world for the benefit of all Mississippi citizens.

MARKET DEVELOPMENT DIVISION

The Market Development Division is responsible for promoting Mississippi's agricultural products and agricultural-related businesses statewide and worldwide through programs such as the Certified Farmers Market Program, Agritourism Registration Program, Farm-to-School Program, and the *Mississippi Market Bulletin*. The Mississippi Farmers Market provides farmers, specialty food processors, and artisans with a convenient, affordable location to sell their locally grown and produced items directly to the consumer.

- The Division received \$441,411.23 in Specialty Crop Block Grant funds from USDA to promote the specialty crop industry in the state. Since its inception in 2006, MDAC has received \$3,792,916.08 from USDA in Specialty Crop Block Grant funds.
- Through the Farm-to-School Program, administered in conjunction with the Mississippi Department of Education, schools ordered 14,153 cases of Mississippi product totaling \$421,282.
- The *Mississippi Market Bulletin* is circulated to nearly 33,000 in-state and out-of-state subscribers twice per month.
- The Mississippi Farmers Market provided a venue for 80 total vendors, an average of 36 a week.

MISSISSIPPI AGRICULTURAL & LIVESTOCK THEFT BUREAU

The Mississippi Agricultural and Livestock Theft Bureau enforces laws to prevent agricultural related thefts. The Bureau investigates any theft that involves agribusiness, including timber theft, equipment theft, chemical theft, and livestock theft. The Bureau also handles the registration of all livestock brands in the state.

- The Bureau investigated 163 cases with a reported value of \$985,066.
- Property valued at \$362,800 was recovered.

MISSISSIPPI AGRICULTURE & FORESTRY MUSEUM

The Mississippi Agriculture and Forestry Museum, the educational arm of the Department, creates an environment that communicates the value of past and present Mississippi agricultural lifestyles, relationships, and practices and their relevance for the future. The Museum tells the story of Mississippi's agricultural history through indoor and outdoor exhibits and educational events.

- The Mississippi Agriculture and Forestry Museum was visited by more than 122,000 people in fiscal year 2018.

EXECUTIVE SUMMARY CONTINUED

BUREAU OF PLANT INDUSTRY

The Bureau of Plant Industry (BPI) protects the agricultural and horticultural interests of Mississippi from harmful insects, diseases, and weeds. The Bureau is also responsible for registering pesticides, feeds, seeds, fertilizers, and soil amendments sold in the state, as well as, permitting all pest control operators throughout the state.

- BPI administers approximately 31 programs, which include Pesticide and Environmental Programs; Structural Pest Control Programs; Incidents and Complaints; Feed, Seed, Fertilizer, Lime, Soil, and Plant Amendment Regulatory; and Testing, Horticulture, Apiary, and Plant Pest Quarantine.
- BPI registered 41,239 feed, fertilizer, lime, and pesticide products; registered 1,490 feed, fertilizer, and lime manufacturers, and distributors; collected 23,777 pesticide, seed, feed, fertilizer, and lime samples; issued 3,718 nursery, nursery dealers, dealers, professional, consultants, and seed licenses; and performed 3,847 certification exams.
- BPI also certified 28,603 bee colonies and monitored 4,121 detection survey traps throughout the state.
- Approximately 36,788 seed tests were analyzed.
- BPI investigated 65 pesticide drift cases.

BUREAU OF REGULATORY SERVICES

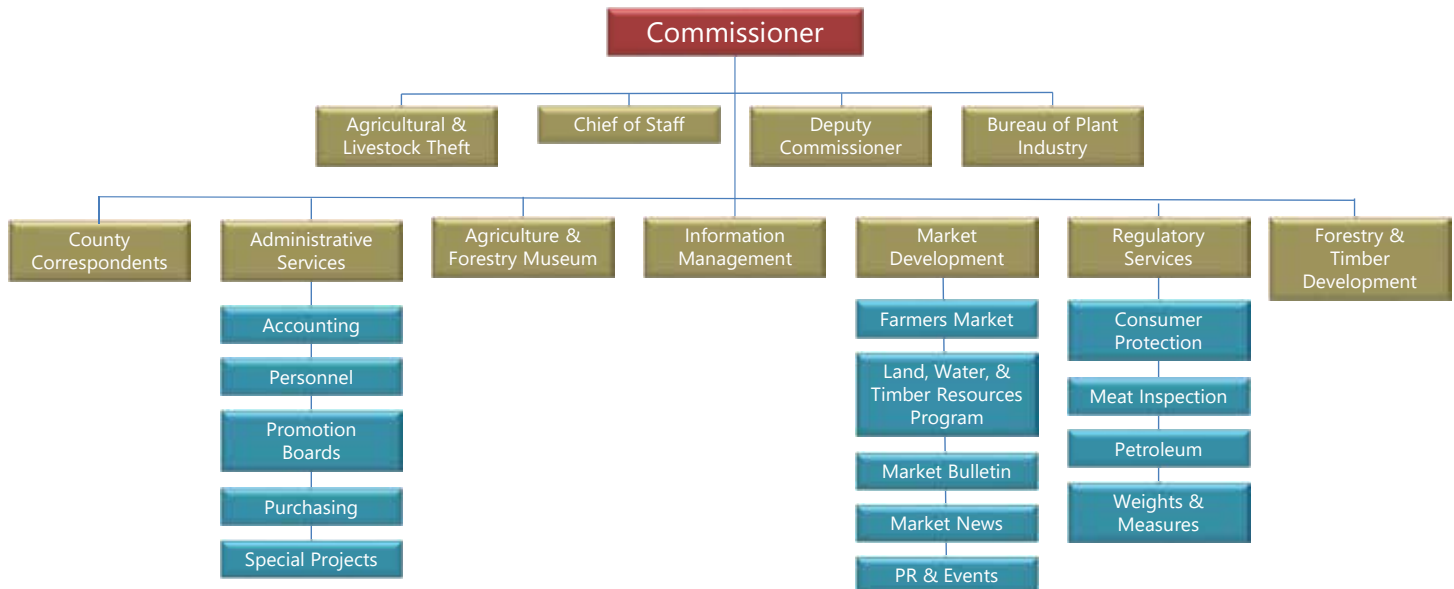
The Bureau of Regulatory Services is responsible for the various regulatory functions of the Department, which extend from on-farm production to processing and retail markets. Regulatory Service Inspectors conduct sanitation inspections of grocery stores and meat plants to ensure the adherence to food safety regulations. They are also responsible for the certification of gas pumps and verification of weights and measures.

- Weights & Measures Division tested 6,135 devices/scales.
- Consumer Protection Division issued 2,468 retail food establishment licenses and conducted 4,841 retail food sanitation inspections.
- Meat Inspection Division inspected 93.21 million pounds of red meat and poultry products.
- Petroleum Products Inspection Division inspected 55,504 individual devices and obtained 1,792 fuel samples.

MISSISSIPPI DEPARTMENT OF AGRICULTURE AND COMMERCE



The mission of the Mississippi Department of Agriculture and Commerce is to promote and regulate agricultural-related businesses in the state and promote Mississippi's products throughout the state and the rest of the world for the benefit of all Mississippi citizens.



ADMINISTRATION

Andy Gipson - Commissioner

Brian Perry - Chief of Staff

Julie McLemore - Deputy Commissioner



MARKET DEVELOPMENT WORKING FOR YOU

The Market Development Division promotes Mississippi agriculture and the state's agricultural products across the state, nation, and world.

The Market Development Division is dedicated to promoting and heightening the public's awareness of Mississippi's agriculture commodities and the farmers and ranchers who produce them, as well as, facilitating market expansion by connecting growers and products to wholesalers, retail businesses, and direct to

customer opportunities. This is accomplished through participation in trade shows, conferences and fairs, international trade, presentations to schools and civic organizations, promotion of local farmers markets, connecting with other agricultural organizations and commodity groups, and various other communication outlets. The Market Development Division consists of three main program areas: communications/outreach, promotional programs, and grants and cost-share programs.

MARKET DEVELOPMENT CONTINUED



COMMUNICATIONS / OUTREACH

The Market Development Division serves as the communications and outreach arm of the Department and is responsible for media and public relations.

The Market Development Division publishes the *Mississippi Market Bulletin*, a buy/sell newspaper for farmers to advertise their agricultural items that have been raised, grown, produced, or operated on their farms. The *Mississippi Market Bulletin* is a semi-monthly publication, published on the 1st and 15th of each month, with a circulation of nearly 33,000 in-state and out-of-state subscribers.



PROMOTIONAL PROGRAMS

The primary focus of the Market Development Division is the promotion of Mississippi agricultural products statewide, nationwide, and worldwide, in order to increase the purchase and consumption of products that are grown, raised, crafted, and made in the state. MDAC administers several programs that promote our agricultural products.

Agritourism Limited Liability Registration Program

MDAC's Agritourism Limited Liability Registration Program provides limited liability and promotion to farms engaged in agritourism activities. There are 73 registered agribusiness operations in the state.

Farm-to-School

MDAC works in conjunction with the Mississippi Department of Education (MDE) to administer the Department of Defense (DoD) Farm-to-School Program. Through this program, fruits and vegetables are purchased from Mississippi farmers and served in schools across the state. MDAC assists MDE with identifying available produce and acts as a liaison with the participating farmers. During the 2018-2019 school-year, \$421,282 of Mississippi produce was ordered by local schools.

Revolving Fund Program

Farmers participating in the Farm-to-School Program utilized the Revolving Fund Program to receive their produce payments within five days of delivery.

MARKET DEVELOPMENT CONTINUED

Certified Farmers Market

MDAC administers the Certified Farmers Market Program to promote farmers markets in the state with Mississippi farmers selling Mississippi produce and other agricultural products. Thirty-two markets were certified in 2019.

Livestock and Grain Market News

The Livestock and Grain Market News Program is a federal/state cooperative agreement in conjunction with USDA. Fourteen livestock auction markets are reported by eight cross-trained Mississippi Board of Animal Health personnel. Prices collected from the fourteen sales represent 85 percent of all the livestock markets throughout the state. Livestock and grain pricing is collected and disseminated throughout the internet and radio five days a week. These prices are used by lending institutions, university agricultural economists, consultants, and livestock associations.

International Trade

MDAC works to create marketing opportunities for Mississippi's farmers and agribusinesses through international trade. MDAC is a member of the Southern United States Trade Association (SUSTA). SUSTA encompasses 14 southern states and the Commonwealth of Puerto Rico. Its mission is to increase exports for U.S. agriculture products and high-value foods. MDAC works jointly with other state and federal agencies to collaborate and deliver accurate information for companies interested in exporting through site visits, research, and providing potential opportunities, such as SUSTA. Market Development staff serve as liaisons for SUSTA to promote opportunities available for Mississippi agriculture and value-added products, in addition to serving as activity managers for trade shows and missions. MDAC staff served as activity managers for the Summer Fancy Food Show in New York City, Food Hotel China 2018 and SIAL China 2019, both located in Shanghai, China, and FOODEX Japan 2019 located in Tokyo, Japan and Outbound Trade Mission to Toronto, Canada in September 2018. These trade shows give small companies the opportunity to have a larger presence by being branded under the SUSTA name and pavilion. Through MDAC's membership in SUSTA, Mississippi companies can take advantage of cost-share programs, allowing them to be reimbursed for eligible expenses incurred to reach new international markets.

MARKET DEVELOPMENT CONTINUED



GENUINE MS



Genuine MS has four unique logos. They allow producers to label their products under Grown, Raised, Crafted, or Made.

Genuine MS was developed by the Mississippi Department of Agriculture and Commerce to identify and promote products proudly created or produced by Mississippi farmers, artisans, entrepreneurs and manufacturers. The purpose of the Genuine MS program is to increase public awareness of Mississippi's farm, food, crafted and fabricated products by branding them as Genuine MS and to add value to Mississippi-made items for those looking for authentic Mississippi products.

The website, GenuineMS.com, serves as a centralized location featuring members' products, while connecting consumers across the globe with the people and places that grow, raise, craft and make Genuine MS products. The program allows member companies to share their unique stories in an effort to increase consumer awareness of their products. Genuine MS shows Mississippi state pride and keeps the economy strong.

There are four classifications of membership determined by the members' products in the Genuine MS program — Grown, Raised, Crafted and Made. The Genuine MS Grown classification consists of farmers who grow everything from produce, nuts and row crops to horticulture and timber in Mississippi. The Genuine MS Raised classification consists of farmers, ranchers and aquaculturists with animals and aquaculture products raised in Mississippi or those selling products from animals and aquaculture products raised in Mississippi. The Genuine MS Crafted classification consists of crafters whose products are hand-created in Mississippi from agricultural products, which includes specialty foods and beverages and pet and artisan products. The Genuine MS Made classification consists of manufacturers whose products are 51% or more manufactured in Mississippi to benefit agriculture.

MARKET DEVELOPMENT CONTINUED



GRANTS AND COST-SHARE PROGRAMS

The Market Development Division offers grant and cost-share programs to assist farmers and agribusinesses. Funding for these programs is made available through USDA rather than state funds.

Specialty Crop Block Grant

Through the Specialty Crop Block Program funded by USDA, MDAC awarded \$441,411.23 to organizations to enhance the state's specialty crop industry. Fifteen projects were awarded to universities and producer organizations to administer research and programs in areas specifically related to youth, consumer, and grower education and workshops, marketing and promotion of local foods, and production research for blackberries, horticulture, sweet potatoes, tomatoes, honey, blueberries, tea, and various other fruits and vegetables.

GAP/GHP Cost-Share Program

MDAC administers the Good Agricultural Practices/Good Handling Practices (GAP/GHP) Cost-Share Program to reimburse farmers for 75 percent of the cost (up to \$500) incurred to obtain the GAP/GHP food safety certification. Twenty-two reimbursements were granted. This program is funded by the USDA Specialty Crop Block Grant Program.

Organic Cost-Share Program

MDAC offers the Organic Cost-Share Program to Mississippi farmers obtaining Organic Certification. The program provided one organic farmer \$750 to offset the cost of the certification. This program is funded through the USDA Agricultural Marketing Service.

Growing Lunch School Garden Grant

MDAC continued the Growing Lunch School Garden Grant through the USDA Specialty Crop Block Program for schools interested in building a school garden. Three schools were awarded a school garden grant in Spring 2019, impacting more than 150 students. MDAC has awarded 61 grants since 2014.

MARKET DEVELOPMENT CONTINUED

ACCOMPLISHMENTS

- Successfully launched the Genuine MS state branding program.
- Received \$441,411.23 in Specialty Crop Block Grant funds from USDA to promote the specialty crop industry of the state. Since its inception in 2006, MDAC has received \$3,792,916.08 from USDA in Specialty Crop Block Grant funds.
- Expanded the Farm-to-School Program, working with the Mississippi Department of Education. During the 2018-2019 school year, schools ordered 14,153 cases of Mississippi products, totaling \$421,282.
- Provided 129 Certificates of Free Sales to 14 companies exporting Mississippi agricultural products.
- Registered 73 agritourism operations for the Agritourism Limited Liability Program.
- Granted three schools a Growing Lunch School Garden Grant.



Genuine MS launched on July 10, 2018, at the Mississippi Agriculture and Forestry Museum. The event was attended by hundreds of farmers and agribusiness owners.

DIRECTOR

PAIGE MANNING

Paige@mdac.ms.gov

MISSISSIPPI FARMERS MARKET

The Mississippi Farmers Market provides a location for Mississippi farmers to sell their locally-grown and produced agricultural products direct to the public.

The Mississippi Farmers Market was created by the Mississippi Legislature to provide a facility for the efficient handling of farm products in the interest of the farmer, consumer, general public, and the State of Mississippi. The 18,000 square foot facility serves as a central location for farmers, specialty food makers, and local artisans to sell their agricultural goods and wares. The Market provides farmers with additional marketing opportunities, while increasing consumers' access to fruits, vegetables, and other farm-raised products.

The Mississippi Farmers Market participates in two USDA Farmers Market Nutrition Programs: The WIC Farmers Market Nutrition Program and the Senior Farmers Market Nutrition Program. These programs provide vouchers to eligible WIC participants and senior citizens to shop at the Market. The Market also participated in the AARP Fresh Savings Program which provided SNAP recipients a dollar-for-dollar match, up to \$20, in tokens to purchase fruits and vegetables when using their EBT card.

The Market also rents the facility for private events. A restaurant, The Farmer's Table, is located inside the Market. It serves breakfast and lunch five days per week and utilizes products from the farmers on their menu.

ACCOMPLISHMENTS

- Provided a venue for 80 total vendors, an average of 36 vendors per week.
- Successfully implemented the AARP's Fresh Savings Program, which increased farmers' sales.



DIRECTOR
LISA RIPPY

Lisa@mdac.ms.gov

COUNTY CORRESPONDENTS PROGRAM



MDAC County Correspondents Program

In April of 2019, Commissioner Gipson established the County Correspondents Program. This program was created to receive timely information on current issues and to be responsive to the issues of local farmers in each county in Mississippi. The program designates farmers from every Mississippi county to serve as County Correspondents. Each correspondent communicates with MDAC on issues affecting their local jurisdiction.

The program is divided into five divisions. Each division has one supervisor that provides status updates to the central office in Jackson.

DIRECTOR

CLAUDE NASH

Claude@mdac.ms.gov

TIMBER COMMERCE

The Timber Commerce Division actively engages with State agencies and the private sector to promote the timber industry

For the first time, the Mississippi Department of Agriculture and Commerce, has a staff member dedicated to the promotion of the Mississippi timber industry.

Approximately 65% of the State of Mississippi is covered in timber; 77% of that land is privately owned. Mississippi has decades of hardwood and softwood timber reserves. MDAC has met with leaders in numerous areas that impact the timber industry including growth, harvesting, transportation, trade, and manufacturing. Each of these areas are critical to the success of expanding timber markets, both domestically and internationally.

MDAC anticipates growth in the timber industry as exposure of Mississippi timber to international markets increases and best practices for the efficient and effective transport of timber products are implemented.

ACCOMPLISHMENTS

- Secured test orders for wood pellets in Taiwan.
- Established working relationships with key agencies, private organizations, and manufacturing entities to move forward with opportunities to grow and prosper the timber industry and our state.



DIRECTOR

GINGER WILLIAMSON

Ginger@mdac.ms.gov

AGRICULTURE AND LIVESTOCK THEFT BUREAU

The Mississippi Agriculture and Livestock Theft Bureau assists in the investigation of all farm and agriculture-related crimes.

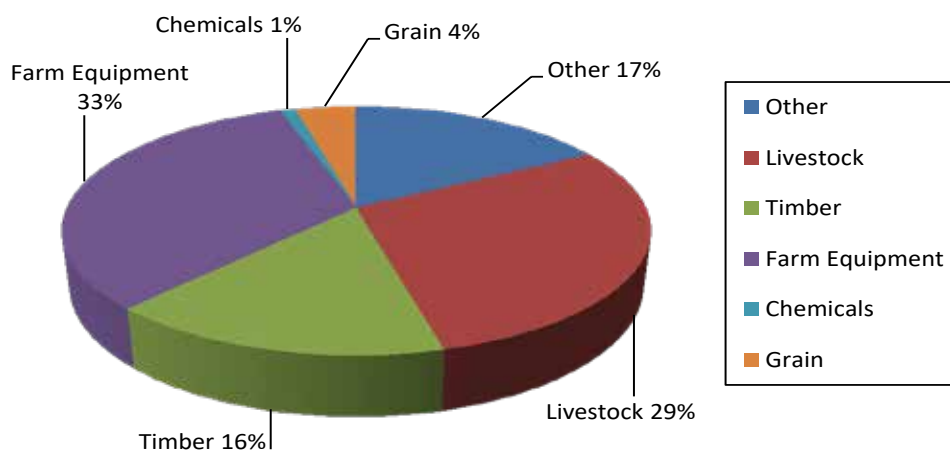
The Mississippi Agriculture and Livestock Theft Bureau (MALTB) enforces all state laws pertaining to the theft of cattle, horses, swine, poultry, fish, farm equipment, chemicals, timber, and all other farm or agriculture-related crimes. The Bureau consists of nine investigators, one for each Mississippi Highway Patrol District. The Bureau is also responsible for the investigation and prosecution of all persons who violate any of the laws administered by the Mississippi Department of Agriculture and Commerce.

In addition to its law enforcement function, MALTB maintains registration of all livestock brands. Livestock in Mississippi do not have to be branded; however, if they are branded, the brand must be registered. The brands are recorded for a five-year period at a cost of five dollars. Registered brands are published in book form and distributed to law enforcement throughout the state. The most current book was printed in August 2018 and has over 1,100 brands registered.



An investigation by the Mississippi Agriculture and Livestock Theft Bureau, the law enforcement division of the Mississippi Department of Agriculture and Commerce, led to the recovery of this stolen Kubota 4-wheel drive tractor with front end loader and utility trailer. The tractor was stolen from Alcorn County.

LIVESTOCK THEFT CONTINUED



**Percentage distribution of dollar value
of reported crimes FY2019.**

ACCOMPLISHMENTS

- Investigated 163 cases with a reported value of \$985,066, clearing 67 cases.
- Recovered property valued at \$362,800.

DIRECTOR

DEAN BARNARD

Dean@mdac.ms.gov



MISSISSIPPI AGRICULTURE AND FORESTRY MUSEUM CULTIVATING MISSISSIPPI

The Mississippi Agriculture and Forestry Museum tells the story of Mississippi's agricultural history through indoor and outdoor exhibits and events.

The mission of the Mississippi Agriculture and Forestry Museum is to create an environment that communicates the value of past and present Mississippi agricultural lifestyles, relationships, and practices and their relevance to the future of all people. The Museum consists of more than 20 exhibits on 39 acres including a 1920's era Small Town, Mississippi, with a General Store,

19th Century Fortenberry-Parkman Farmstead, the Fitzgerald Collection of Native American history and Mississippi Delta memorabilia, a model train exhibit featuring several gauges of trains, and a nature trail. Visitors will find antique farm equipment and machinery, as well as farm animals including cattle, mules, chickens, a horse, and additional animals on a rotating basis. The Mississippi Agriculture and Forestry Museum is home to the Bisland Cotton Gin, America's oldest working cotton gin, and the National Agriculture Aviation Museum.

MISSISSIPPI AGRICULTURE AND FORESTRY MUSEUM CONTINUED



ANNUAL EVENT HIGHLIGHTS

- The Mississippi Agriculture and Forestry Museum, in cooperation with the the LeFleur Museum District, hosted the second annual Mississippi Science Fest with over 4,500 students and adults attending the two day festival. Presenters included groups from MS State University Engineering Departments, 4-H, MSU Extension, agriculture associations, and STEM-based private businesses.
- Over 8,000 children and adults attended the October Pumpkin Adventure, which included a hay ride tour of gardens and Small Town, Mississippi, a walk around the Museum, and a pumpkin to take home.
- Harvest Festival was visited by nearly 3,000 people. This educational event consisted of demonstrations at the saw mill, cane mill, print shop, blacksmith shop, and grist mill. The Bisland Cotton Gin, America's oldest working cotton gin, ginned multiple bales of cotton for visitors. The event also featured hit-and-miss engines, bluegrass music, antique tractors, and live interpreters demonstrating butter churning at the Fortenberry-Parkman Farmstead.
- The Museum hosted more than 700 guests for its Homestead for the Holidays event. This complementary event was sponsored by the Mississippi Egg Marketing Board and the Mississippi Beef Council. Guests were treated to wagon rides, Small Town in Lights, a skit, live music, and breakfast for dinner.
- The Mississippi Egg Marketing Board's Annual Easter Egg Hunt at the Museum attracted more than 1,700 visitors who enjoyed complimentary sausage and biscuits, rides, egg dyeing, games, and an egg hunt.
- For more than 20 years, the Mississippi Agriculture and Forestry Museum has been home to the Celtic Fest. More than 2,800 attendees enjoyed the event in March 2019.
- Spring Farm Days offered the opportunity for more than 1,400 visitors to see tractor demonstrations, blacksmith demonstrations, and tour the Fortenberry-Parkman Farmstead over a 3-day period.

MISSISSIPPI AGRICULTURE AND FORESTRY MUSEUM CONTINUED

- AgVentures presented 700 fourth grade students and teachers the important role agriculture plays in our society. Interactive activities and displays included a catfish presentation, a reptile presentation, a tour of the nature trail, milking Cloverbelle the Cow at the 4-H Museum, and presentations about Mississippi's agriculture and forestry products and industries. It was held in partnership with Mississippi State University Extension Service, Mississippi Farm Bureau, Mississippi Cattlemen's Association, Mississippi Cattlewomen's Association, Mississippi Department of Wildlife Fisheries and Parks, Mississippi Soil and Water Commission, and USDA's Natural Resources Conservation Service.
- The Mississippi Agriculture and Forestry Museum Foundation held the 4th annual "Lane of Lanterns" fundraising dinner featuring locally grown meats, fish, and produce. The Foundation also held the "Appetizers and Artifacts" fundraising cocktail event.



Commissioner Andy Gipson speaks at the ground breaking for the Museum's Children's Barnyard, which is expected to be completed in March 2020.

MISSISSIPPI AGRICULTURE AND FORESTRY MUSEUM CONTINUED



NEW PROGRAMMING

- The Mississippi Agriculture and Forestry Museum was selected as a host site for the Smithsonian Institutes Travelling Exhibition Services Water/Ways exhibit. This exhibit was a collaboration with the Smithsonian's Museum on Main Street program and the Mississippi Humanities Council. The exhibit welcomed over 4,000 visitors from December 10, 2018, to January 22, 2019.



NEW PROJECTS

- The Mississippi Agriculture and Forestry Museum has completed replacing the Museum's maintenance shop and exhibition barn. The Mississippi Agriculture and Forestry Museum began the construction of phase two for the Museum's Children's Barnyard on January 25, 2019. These buildings are all replacements from the November 2014 fire.
- The Museum completed the reconstruction and renovation work on the Fortenberry-Parkman Farmstead. This project was jointly funded through the Community Heritage Preservation Grant, administered by the Mississippi Department of Archives and History, and the Mississippi Agriculture and Forestry Museum Foundation. Traditional materials and techniques were used to preserve the historical accuracy of the buildings in the farmstead in accordance with Mississippi Department of Archive and History standards. The collection of buildings is significant because it is a fully intact Mississippi farm representative of the typical farmer from 1860 to 1960. In total, eight buildings on the Farmstead have returned to an accessible state for the public, increasing the educational value of the exhibit, and restoring a site that has great potential for heritage tourism.
- The Mississippi Agriculture and Forestry Museum is continuing the redesign of the National Agriculture Aviation Museum exhibit using funding from the Mississippi Agriculture and Forestry Museum Foundation. Renovation work on the exhibit is scheduled for Fall 2019.
- The Mississippi Agriculture and Forestry Museum is in the beginning stages of replacing the roof of the Education Center. In June of 2019, the bid process was opened. Completion of the project is scheduled for Spring of 2020.

MISSISSIPPI AGRICULTURE AND FORESTRY MUSEUM CONTINUED



Ribbon cutting event held for the opening of the newly rebuilt Exhibit Barn on June 21, 2019.



GRANT PROJECTS

- The Visit Jackson Marketing Match grant for out-of-market advertising expenses for 2018-2019 is estimated to be more than \$14,000.
- The Mississippi Agriculture and Forestry Museum is nearing completion of the redesign stage for the National Agriculture Aviation Museum exhibit. The Foundation pledged more than \$100,000 for the renovation.
- In the spring of 2019, the Mississippi Agriculture and Forestry Museum received a grant of \$25,000 from the Mississippi Forestry Association for the redesign of the forestry exhibit located in the main gallery of the Museum.

DIRECTOR

HAYES PATRICK

Hayes@mdac.ms.gov



BUREAU OF PLANT INDUSTRY PROTECTING AGRICULTURAL AND HORTICULTURAL INTERESTS

The Bureau of Plant Industry protects the agricultural and horticultural interests of the state from harmful insects, diseases, and weeds.

The Bureau of Plant Industry (BPI) is a regulatory and service division of the Mississippi Department of Agriculture and Commerce. BPI serves as the Plant Protection and Quarantine Division of the agency. BPI administers 31 programs pertaining to agricultural aviation, pesticides, plant pests, honey bees, seed,

animal feed, fertilizer, lime, and soil/plant amendments. Additionally, the Bureau maintains cooperative agreements with the United States Environmental Protection Agency (EPA) and the U.S. Department of Agriculture (USDA) in administration and enforcement of state and federal laws. BPI is also designated by the federal government as the state agency responsible for the administration and enforcement of the Federal Insecticide, Fungicide, and Rodenticide Act (FIFRA).



PLANT PEST PROGRAM

Under the provisions of the Mississippi Plant Act, the Bureau carries out plant pest programs designed to prevent the spread of destructive insects, diseases, and other pests when plant material, machinery, and carriers are transported. These programs include inspection, certification, quarantine, and survey activities.

ACCOMPLISHMENTS

- Certified 277 nurseries.
- Certified 945 nursery dealers.
- Issued 440 phytosanitary certificates for plant material and seed export.
- Conducted 1,518 visual surveys statewide at nurseries and nursery dealers for Pink Hibiscus Mealybug, Chrysanthemum White Rust, Viburnum Leaf Beetle, Emerald Ash Borer, Giant African Snail, Cactus Moth, and Asian Longhorned Beetle. Survey results at all sites were negative.
- Conducted 90 visual surveys at 30 soybean production fields in 21 counties for Maritime Garden Snail, Bud Borer, Cucurbit Beetle, Pink Hibiscus Mealybug, Yellow Witchweed, and Benghal Dayflower. Survey results at all sites were negative.
- Conducted 89 visual surveys at eight different production corn fields for Cucurbit Beetle, Late Wilt or Corn, Black Maize Beetle, Java Downy Mildew, Philippine Downy Mildew, and Brown Stripe Downy Mildew.
- Conducted 82 visual surveys at 82 cotton production fields in 11 counties for Giant African Snail, Cotton Seed Bug, Pink Hibiscus Mealybug, and Benghal Dayflower. Survey results at all sites were negative.
- Conducted 45 visual surveys at 25 rice production fields in five counties for Giant African Snail, Apple Snails, South American Leaf Miner, Bakanae, Senegal Tea Plant, Bacterial Leaf Streak of Rice, and Bacterial Blight of Rice. Survey results at all sites were negative.
- Conducted 1,518 visual surveys statewide in nurseries, nursery dealers, and the environment for the noxious weed Cogongrass. Survey results at all sites were negative.
- Traps were set in 12 locations for Exotic Bark Beetle. These sites were located within Lowndes, Oktibbeha, and Clay Counties. In total, 458 samples were collected and screened for exotic species. All samples screened were negative for all reportable exotic species.
- Placed six traps at lumber mills and furniture manufacturers in six counties for the Sirex Woodwasp. Results from all traps were negative.

BUREAU OF PLANT INDUSTRY CONTINUED

- Placed 15 traps at high risk sites in five counties for Mediterranean Pine Engraver, Six-toothed Bark Beetle, European Spruce Bark Beetle, Pine Shoot Beetle, Red Haired Pine Bark Beetle, Japanese Pine Sawyer, Large Pine Beetle, and Black Fir Sawyer. Results from all traps were negative.
- Serviced 63 sweet potato growers.
- Monitored 2,529 traps on 25,762 acres of sweet potatoes with no positive Sweet Potato Weevil detection.
- Sweet potato seedstock, equipment, and any other items from sweet potato fields from Florida, North Carolina and South Carolina were quarantined. This was to protect Mississippi cropland from the spread of the Guava Root Knot Nematode.
- Continued to directly serve landowners in an effort to control Cogongrass.
- Conducted a Cogongrass demonstration program for 306 private land owners treating 1,838 acres.
- BPI continues to assist eligible non-industrial private landowners in combatting Cogongrass through temporary grants from the USDA Forest Service. The primary objective of the Cogongrass Treatment Program is to reduce the spread of this noxious weed to new areas by helping private landowners control or eradicate existing infestations. Cogongrass (*Imperata cylindrica* L.) is a non-native, invasive grass that is a state and federal noxious weed. Cogongrass has been recognized as one of the “Top 10 Worst Weeds in the World.” Cogongrass infestations negatively affect tree regeneration, growth, and survival, as well as wildlife habitat, native plant diversity, forage quality and property values.
- Collected assessment fees on 592,725 acres of cotton by farmers participating in statewide eradication of the Boll weevil.
- Certified and inspected 28,603 colonies of honey bees.
- Permitted 80,733 bee colonies into Mississippi.
- Issued 440 federal and state phytosanitary certificates on plant materials such as nursery stock, seed, and lumber. Phytosanitary certificates facilitate trade with states and foreign countries requiring documentation certifying plant materials are free of disease and pests.
- BPI implemented a program designed to assist private landowners in preventing and controlling the ornamental tallow tree through the use of herbicides. Landowners can apply for herbicide assistance or request preventative measures to control or eradicate existing infestations.



PESTICIDE PROGRAM

Under the provisions of the Mississippi Pesticide Law, the Bureau of Plant Industry carries out various activities to register and inspect pesticide products, administers special types of pesticide registrations and exemptions, license dealers of restricted-use pesticides, and conducts activities protecting the general public and the environment from possible pesticide contamination and misuse.

ACCOMPLISHMENTS

- Registered 14,604 pesticide products.
- Collected 452 samples from products available at retail and distribution outlets to check compliance with state and federal pesticide laws.
- Issued 89 stop-sale orders on pesticide products found to be deficient, misbranded, and non-registered.
- Issued two special-use registrations (Section 24c of FIFRA) on pesticide products.
- Issued four emergency exemptions (Section 18 of FIFRA) on pesticide products.
- Licensed 272 dealers to sell restricted use pesticide products.
- Issued 756 licenses/permits and 1,341 registered technician identification cards to persons engaged in professional services such as pest control and weed control services.
- Licensed 197 agricultural aviation pilots and 87 applicators, and registered 158 aircrafts for agricultural purposes.
- Issued 178 pest management consultants licenses.
- Issued two soil classifier licenses.
- Issued 3,571 private applicator certificates.
- Issued 439 commercial applicator certificates.
- Conducted 40 producer-establishment inspections, 634 marketplace inspections, 615 inspections of applicator records, 194 inspections of dealer records, and 33 container containment inspections.
- Conducted 19 nonagricultural/for cause inspections of pesticide misuse and 73 agricultural/for cause inspections of pesticide misuse.
- Conducted 1,561 nonagricultural inspections of pesticide use and 59 agricultural inspections of pesticide use.
- Collected 139 samples under the Pesticide Enforcement Program.
- Conducted 34 worker protection inspections.
- Collected 34,746 pounds of waste pesticide products for disposal.
- Issued 124 Horticulturalists licenses.
- Issued 21 Tree Surgeons licenses.

ACCOMPLISHMENTS

MDAC and Mississippi State University developed an Auxin online educational training course addressing off-target movement, tank cleanout, and herbicide volatility. Prior to any agricultural producer purchasing or applying 2,4-D or dicamba, which is intended to be used on tolerant varieties of cotton, corn, or soybeans, the producer must complete the Auxin online training.

MDAC and Mississippi State University developed an online educational training course addressing applicators who plan to physically apply the dicamba herbicides (XtendiMax, FeXapan, Tavium, and Engenia). Applicators must undergo mandatory training imposed due to label changes by the Environmental Protection Agency (EPA).

BPI worked to provide training concerning pesticide laws and regulations with various agricultural stakeholders, including MSU-Row Crop Short Course, Mississippi Agricultural Consultants Association, Mississippi Seedsmen's Association, Mississippi Agricultural Aviation Association (MAAA), MAAA's Safety Meeting, Mississippi Pest Control Association, Mississippi Vegetation Management Association, National Pest Management Association, Mississippi Nursery and Landscape Association, Mississippi Mosquito Control & Vector Association, Mississippi Department of Health, and Mississippi Farm Bureau Specialty Meetings.

BPI has continued its efforts implementing the Mississippi Honeybee Stewardship Program. The program promotes awareness, communication, and education between beekeepers and farmers. This program was developed through a joint effort between the Mississippi Farm Bureau, Mississippi Department of Agriculture and Commerce, Mississippi Beekeepers Association, Mississippi Agricultural Aviation Association, Mississippi State University Extension Service, Mississippi Agricultural Consultants Association, Mississippi Agricultural Industry Council, and row crop farmers.

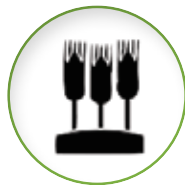


SEED PROGRAM AND STATE SEED LABORATORY

The Seed Testing Laboratory provides regulatory and service seed testing to the seed industry and farmers of Mississippi. The seed lab inspects and collects samples of seed offered for sale to determine truth-in-labeling. Seed companies and farmers may submit samples of seed for testing to obtain quality and purity levels of seed. Regulatory and service tests protect and support seed companies and farmers by providing unbiased and reliable information in a timely manner. The Seed Testing Laboratory also tests all seed for the Mississippi Certified Seed Program.

ACCOMPLISHMENTS

- Issued 2,046 permits for the sale of seed to be planted.
- Received 19,934 seed samples and performed a total of 36,788 tests on seed.
- Collected 4,651 official regulatory seed samples and found 79 official regulatory seed samples to be in violation of the State Seed Law.
- Conducted 8,524 special tests on seed such as cool germ test, accelerated aging, and chemical tests.



FEED, FERTILIZER, LIME, AND SOIL AMENDMENTS PROGRAM

Under provisions of Mississippi laws regulating feed, fertilizer, lime, and soil amendment products, the Bureau of Plant Industry carries out activities that include registering products and facilities, collecting registration and inspection fees, inspecting and sampling products for label guarantees, and assessing penalties for substandard products.

BUREAU OF PLANT INDUSTRY CONTINUED

ACCOMPLISHMENTS

- Registered 14,333 feed products from 1,015 feed distributors.
- Collected 2,495 feed samples.
- Registered 12,119 fertilizer products from 395 fertilizer distributors.
- Collected 791 fertilizer samples.
- Registered 183 lime products from 80 distributors.
- Collected 105 lime samples.



PUBLIC INFORMATION PROGRAM

The BPI public information program provided updates and training material for the following groups and/or events: Fall Flower and Garden Fest in Crystal Springs; Mississippi Agricultural Aviation Association Convention in Biloxi; Pesticide Re-certification Trainings at the Panola County Extension Office, Coastal Research and Extension Center, Forrest County Extension Office, Central MS Research and Extension Center, Delta Research and Extension Center, North MS Research and Extension Center; Annual Mississippi Pest Control Association Meeting, Mississippi Vegetation Management Association, Mississippi Rice Council, Nursery and Landscape Association, Mississippi Entomological Association, Mississippi State University – Row Crop Short Course, Mississippi State University Crop College, and Mississippi Farm Bureau Federation – Agricultural Consultants Meeting.

DIRECTOR

MICHAEL LEDLOW

MichaelL1@mdac.ms.gov



**CONSUMER PROTECTION * MEAT INSPECTION * WEIGHTS & MEASURES
PETROLEUM INSPECTION * FEDERAL/STATE INSPECTION**

REGULATORY SERVICES PROTECTING MISSISSIPPI

The Bureau of Regulatory Services is a regulatory bureau within the Mississippi Department of Agriculture and Commerce. Its mission is to effectively and efficiently administer and enforce the laws and regulations charged to the Bureau. The foremost goals of the Bureau are to protect the health and economic welfare of all citizens, to afford a measure of economic protection which citizens cannot provide for themselves, and to strive for equity in the marketplace which, when realized, works to the good of all citizens of this state.

The Bureau is divided into area-specific divisions that regulate certain businesses within the state. The Bureau administers state laws and promulgates regulations to support those laws in the areas of Meat Inspection, Retail Food Sanitation, Labeling laws, Grains, Aquaculture, Peanuts, Petroleum, and Weights and Measures. The Bureau partners with multiple federal and state agencies to carry out its mission.

Adam Choate - Director
Adam@mdac.ms.gov
Gene Robertson - Deputy Director
Gene@mdac.ms.gov

CONSUMER PROTECTION



FOOD QUALITY AND SAFETY

The Consumer Protection Division protects the interests of the general public by ensuring food quality and safety and fairness in addition to equity in the retail marketplace.

The Consumer Protection Division continues to be one of the most diversified divisions within the Department. The Division's goal is to protect Mississippi consumers on a daily basis by enforcing retail food safety and sanitation laws and regulations, weights and measures standards, and food labeling requirements in retail food establishments such as convenience stores and grocery stores. The Division conducts routine inspections of all retail food establishments throughout the state to ensure that food safety and sanitation regulations are being met. The Division's inspectors routinely examine meat market sanitation, ensure food is stored at appropriate temperatures, confirm the availability of hot water and soap in restrooms, and monitor stores to ensure the absence of insects and rodents.

The Consumer Protection Division Inspectors examine scales in all retail food establishments to confirm that weights and measures standards for purchased items are being met. They also ensure consumers receive the quantity and quality of the goods they pay for by testing scales and UPC pricing for accuracy to make sure the consumer is not being overcharged or undersold when purchasing a product.

Consumer Protection weights and measures inspections include the following:

- Ensuring the accuracy of scales, including meat scales, deli scales, produce scales, and checkout scales.
- UPC price verification sample testing, which ensures that prices on shelves match prices at checkout registers.
- Net weight package checking inspections, which ensure not only that consumers are paying for only the net weight of foods, but also that the correct weight is properly applied to the price of the product.

The Consumer Protection Division also enforces proper food labeling requirements through cooperative agreements and collaboration with government entities.

CONSUMER PROTECTION CONTINUED

The Consumer Protection Division works with the United States Department of Agriculture (USDA) Food Safety and Inspection Service to perform inspections of retail food establishments to ensure that illegally processed meats are not sold in retail food establishments.

The Consumer Protection Division conducts Country-of-Origin Labeling (COOL) inspections through a cooperative agreement with the USDA Agricultural Marketing Service. Foods such as muscle cuts of meats, fresh fruits and vegetables, and unprocessed nuts must have country-of-origin declarations at the final point of sale.

The Consumer Protection Division's food labeling responsibilities also include inspection of the sale of pure honey and pure syrup. The Division works in collaboration with the Mississippi State Department of Health and the Mississippi State Chemical Lab to regulate the sale of honey and syrup. Pure honey and pure syrup label inspections are performed to ensure consumers are receiving the product as it is advertised on the labels.

These cooperative efforts are performed routinely so that consumers are educated and aware of the quality and origin of the foods they purchase.

CATFISH, SHRIMP, AND CRAWFISH

It is essential to ensure catfish, shrimp, and crawfish being promoted as U.S. products are not being discreetly replaced with foreign substitutes. The Consumer Protection Division makes inspections in restaurants throughout the state, making sure to prohibit retailers from selling similar foods disguised or labeled incorrectly as U.S. products.

EMERGENCY ASSISTANCE

The Consumer Protection Division has maintained a natural disaster partnership with the FDA and other state agencies in the event of natural disasters, such as hurricanes and tornadoes. In an effort to help emergency responders, the Division has mapped the GPS coordinates of all of its inspected stores.

CONSUMER PROTECTION CONTINUED



ACCOMPLISHMENTS

- Issued 2,468 retail food establishment license.
- Conducted 4,841 retail food sanitation inspections.
- Checked 33,364 items for net weight.
- Inspected 65,230 dozen of shell eggs.
- Conducted 3,215 meat compliance inspections; 3,636 disposition of garbage inspections; and 961 UPC price verification inspections.
- Conducted 380 Catfish/Shrimp/Crawfish Marketing inspections.
- Conducted 41 USDA COOL audits.

DIRECTOR

ADAM CHOATE

Adam@mdac.ms.gov

FEDERAL/STATE INSPECTION PROGRAM



FOOD SAFETY

The Federal/State Inspection Program Division provides quality inspections for produce growers as well as unbiased food safety audits.

This Division conducts fruit and vegetable inspections as well as third party food safety audits known as Good Agricultural Practices/Good Handling Practices (GAP/GHP) audits. All inspections and food safety audits are provided statewide to farms, packers, and wholesalers.

The GAP/GHP audits are voluntary independent audits of produce suppliers throughout the production and supply chain. GAP/GHP audits focus on best agricultural practices to verify that fruits and vegetables are produced, packed, handled, and stored in the safest manner possible to minimize risks of microbial food safety hazards. The audits verify adherence to the recommendations made in the U.S. Food and Drug Administration's *Guide to Minimize Microbial Food Safety Hazards for Fresh Fruits and Vegetables* and industry recognized food safety practices.

Farmer Stock Peanuts must be inspected and a grade issued per lot in order for the farmer to receive payment at the point of sale. The Federal/State Inspection Program Division grades the peanuts brought to buying points in the state.

ACCOMPLISHMENTS

- Conducted 78 GAP/GHP food safety audits.
- Graded 39,404 tons of peanuts at four buying points in the state.

PRODUCE SAFETY DIVISION

The Produce Safety Division provides food safety assurance for consumers of fresh fruit and vegetables which are grown in the state of Mississippi.

The Mississippi Department of Agriculture and Commerce's Produce Safety Division was established in order to implement the Produce Safety Rule in Mississippi. The Produce Safety Division will not only regulate the Produce Safety Rule in Mississippi but will also provide Outreach and On Farm Readiness Reviews to farmers prior to an operation having an inspection. The Outreach group will work to increase awareness of the Produce Safety Rule as well as help growers prepare their operations for compliance. All outreach services, with the exception of our required training, are free to growers in Mississippi.

ACCOMPLISHMENTS

- Identified 200 farms which grow and sell covered produce under the rule.
- Identified seven large farms which received inspections this year.
- Provided seven On Farm Readiness Reviews to identified large farms.
- Performed 95 educational farm visits to possible growers.
- Provided growers with four Produce Safety Alliance Grower trainings in conjunction with Mississippi State University Extension Service and Alcorn State University.
- Developed Produce Safety Division web-site for grower education.
- Mailed over 300 Produce Safety Educational packets to possible growers.
- Promoted the Produce Safety Rule at over 15 meetings and workshops statewide.

DIRECTOR

KEVIN RIGGIN

Kevin@mdac.ms.gov

PETROLEUM PRODUCTS INSPECTION



ENSURING COMPLIANCE

The Petroleum Products Inspection Division regulates the motor fuel sold in Mississippi to ensure that those who purchase petroleum products and motor fuels get what they pay for in terms of quality and quantity.

All petroleum products sold in the state must be registered with MDAC's Petroleum Products Inspection Division. All retail motor fuel products which include gasoline, ethanol blended fuel, diesel fuel, biodiesel blended fuel, and kerosene, are analyzed by the Mississippi State Chemical Lab to ensure product compliance within ASTM specifications. Analysis includes tests for octane number, alcohol content, diesel flash point, biodiesel content, and the presence of water in fuel.

The Division regulates approximately 2.3 billion gallons of fuel consumed by Mississippians and visitors to our state and conducts annual inspections of the Retail Motor-Fuel Dispensers (RMFD), commonly known as gas pumps, in the state to ensure that they are in compliance with all laws and regulations. These inspections consist of ensuring the accuracy of RMFDs, testing for the presence of water, checking signage to ensure that the proper price is displayed on all signs, and checking the quality of the fuel to ensure proper product designations. Violations are issued for equipment found to be out of compliance with the petroleum law. Petroleum equipment repairmen are required to obtain a license from MDAC and report all adjusted devices to the Division.

ACCOMPLISHMENTS

- Continued efforts of maintaining efficiency by eliminating printed inspection reports by 99 percent. Reports are sent electronically to respective responsible parties with a valid email address.
- Registered 216 fuel distributors and licensed 459 petroleum equipment repairmen.
- Conducted annual inspections of 55,504 registered devices at 2,705 retail establishments and obtained 1,792 fuel samples.
- Inspected a total of 57,783 individual devices.
- Responded to 223 consumer complaints within 24 hours, which resulted in corrective action being taken in over 28% of the complaints for non-compliance.
- Enforced stop sales for 181 fuel violations, 122 calibration violations, 264 sign violations, and 139 water violations.

PETROLEUM PRODUCTS CONTINUED



The Petroleum Products Inspection Division regulates approximately 2.3 billion gallons of fuel consumed by Mississippians and visitors to our state.

DIRECTOR
JENNIFER THOMPSON
Jennifer@mdac.ms.gov

MEAT INSPECTION



FOOD SAFETY

The Meat Inspection Division provides food safety assurance to consumers of meat and poultry food products.

The Meat Inspection Division provides inspection services to establishments that prepare meat and poultry food products for entry into intrastate commerce and to some establishments that engage in interstate commerce. The Division inspects all establishments engaged in the slaughtering of food animals and poultry, except for those plants operating under federal inspection. The Division also inspects the further processing of meat, meat-food products, poultry, and poultry food-products and their preparation for consumer items. These products are also inspected throughout formulation, packaging, labeling, and distribution to retail outlets. This assurance is becoming more critical as more food products are intended to be consumed with little or no further preparation at home.

MDAC has a cooperative agreement with the USDA establishing a meat and poultry inspection system that is equal to the federal inspection system. In addition, MDAC has cooperative agreements for the Talmadge-Aiken Program (TA), which permits state employees to provide inspections at federal meat plants, as well as the Compliance and Investigation Division Program (CID), which gives authority to inspect businesses that handle meat and poultry for law compliance.

In the past few years, consumer interest has increased dramatically in locally grown and processed meat and poultry. Two new red meat slaughter plants have been built and a third has expanded their slaughter capacity. This expansion allows local producers to sell their meat directly to consumers or to retail stores and restaurants. A new small poultry slaughter plant opened in September 2019. This provides small poultry producers a facility that produces poultry that may be sold in retail stores and restaurants.

MEAT INSPECTION CONTINUED



The Meat Inspection Division provides food safety assurance to consumers in Mississippi. In 2019, the Division inspected 26.65 million pounds of red meat and 66.56 million pounds of poultry.

ACCOMPLISHMENTS

- Inspected 26.65 million pounds of red meat and 66.56 million pounds of poultry.
- Inspected 16,585 rabbits and 4,777 quail.
- Issued licenses to 28 state meat plants.
- Inspected 21 plants through the Talmadge-Aiken program.

DIRECTOR

RICHARD BENTON, D.V.M.

RichardB@mdac.ms.gov

WEIGHTS & MEASURES



ENSURING ACCURACY

The Weights and Measures Division regulates the use of weighing and measuring devices used in commerce to ensure consumers are treated fairly in the marketplace.

The Weights and Measures Division inspects and tests scales and measurement equipment used in commerce to ensure compliance with state laws and equity in the marketplace.

Division inspectors make routine inspections on all types of commercial weighing devices; including railroad scales, vehicle scales, livestock scales, hopper scales, floor scales, bench scales, and those used to weigh precious metals and stones like gold, silver, and diamonds. Inspectors conduct package inspections to verify the net contents of packaged commodities and price verification inspections in businesses that utilize UPC scanning systems. The Division also investigates complaints involving weighing and measuring devices.

The Division also licenses livestock facilities, livestock auctioneers, pulpwood facilities, bonded weighmasters, scale service companies, and repairmen that install and repair weighing or measuring devices within the State of Mississippi. The Division also maintains the Mississippi Metrology Laboratory at Alcorn State University and the Moisture Meter Testing Laboratory in Stoneville.



MOISTURE METER TESTING LABORATORY

The Mississippi Moisture Meter Laboratory provides testing and inspection of devices used to measure the moisture content of agricultural products offered for sale, processed, or stored, using standard methods set by the USDA. The Moisture Meter Laboratory also compiles grain standards used in the inspection of grain moisture meters tested in the State of Mississippi. The laboratory is located on the campus of the Delta Research and Extension Center in Stoneville.

WEIGHTS & MEASURES CONTINUED



The Weights and Measures Division makes routine inspections on all types of commercial weighing devices; including railroad scales, vehicle scales, livestock scales, hopper scales, floor scales, bench scales, and those used to weigh precious metals and stones like gold, silver, and diamonds.

ACCOMPLISHMENTS

- Weights and Measures Division tested 6,135 devices/scales.
- Inspected 1,248 heavy scales, 4,887 intermediate scales, 183 livestock scales, and 63 railway track scales.
- Calibrated 24 dairy farm milk tanks.
- Conducted 82 bonded weighmaster inspections, 139 pulpwood/timber inspections, 602 package inspections, and 159 UPC inspections.
- Conducted 164 oven tests (38 corn, 44 rice, 62 wheat, 20 soybeans).
- Conducted 309 grain moisture inspections.

DIRECTOR

BRENT BOWMAN

Brent@mdac.ms.gov

WEIGHTS & MEASURES CONTINUED



METROLOGY LABORATORY

The Mississippi Metrology Laboratory tests, calibrates, and certifies measuring devices used in commerce for accuracy.

The Regulatory Services Bureau maintains the Mississippi Metrology Laboratory located on the campus of Alcorn State University in Lorman. The lab is accredited for the testing of mass, volume, and length by the National Institute of Standard and Technology (NIST), which certifies weighing and measuring test equipment to validate the accuracy of these standards. The certification allows the Lab to provide certification and calibration services for government, commercial, and private entities. Once certified, the equipment can be used for testing and calibrating of mass and volume standards. This certification allows the Department to test all measuring devices for accuracy used in commerce which is traceable to NIST.



ACCOMPLISHMENTS

- Calibrated 4,398 devices.

DIRECTOR

MEL IASIGI

Mel@mdac.ms.gov

INFORMATION MANAGEMENT



TECHNOLOGY

The Information Management Division provides information technology services to MDAC staff.

The Information Management Division (IMD) is primarily responsible for providing information technology and services to all employees of the Mississippi Department of Agriculture and Commerce. Also, IMD provides technical and network support, application development and systems support, and strategic planning services for both the Mississippi Board of Animal Health and the Mississippi State Fair Commission.

IMD plays a critical role in aligning information technology with the agency's business goals, providing the infrastructure resources to support the agency's communication and decision making, and exploring emerging technologies to promote agriculture and commerce in the state.

ACCOMPLISHMENTS

- Launched agency Intranet (AgNet).
- Implemented a paperless, cloud based, timesheet.
- Replaced paper based building check-in/out, sign in book with digital application.
- Upgraded network storage and increased performance.
- Launched new Market Bulletin application. This allows subscribers early access to the digital Market Bulletin.
- Updated the Museum and Fair Commission MS Access use permits rental contract database.
- Updated the Keep MS Beautiful and Avenue of Magnolias database.
- Participated in the Mississippi Technology User Group annual conference.
- Assisted with the SASDA annual conference with web site, registrations, photography, audio/visual support.
- Replaced regulatory laptops and upgraded WinWam software.
- Established exam proctoring for National Conference on Weights and Measures (NCWM) professional certification program including computer setup and proctor certification.
- Hired new employees for general support, MS Access support, WinWam, and Intranet support.

INFORMATION MANAGEMENT CONTINUED

- Established standard operating procedures for drone deployment program and assisted with drift complaints.
- Provided multimedia services including drone and digital photography collection for Agriculture impacts of Mississippi River flooding, Ag Aviation Museum footage, Mistletoe Marketplace, Mercantile Market, MS Technology User group, Dixie National Rodeo (DNR) setup, DNR wagon train and DNR Parade, as well as live streaming (Hemp Task Force) and creation of standardized PowerPoint presentations for agency events and multiple large format poster prints.



Aerial drone picture of the new Mississippi Trade Mart, which is scheduled to be completed in 2020.

- Collection of drone videos for Genuine MS and documentation of Mississippi commodities including catfish, cotton, soybean, corn, cattle, sweet potatoes, peanuts, hay, and Christmas trees.
- Assisted Ag Theft with drone mapping and geospatial analytics including printing large maps with line of site and points of interests displayed.
- Provided drone aerial documentation of various infrastructure projects including construction progress of the Trade Mart and Ag Museum, building roof damage at museum and fairgrounds, various parking lot and building repair projects, and erosion at the museum.
- Collected aerial drone footage at various events including Spring Farm Days, MS Science Fest, Pumpkin festival, Harvest fest, Homestead for the Holidays, Museum Easter Egg Hunt, various ground breaking ceremonies and event launches (Exhibit Barn and Equipment Shop).
- Provided mapping services including MS Ag Museum and Fairgrounds aerial maps, regulatory bureau maps and provided GIS data to the MS Secretary of State for their online mapping application.

INFORMATION MANAGEMENT CONTINUED

- Converted Museum “On the Go” mobile payment application platform from unstable Apple/Android version to much more stable web based system.
- Upgraded BPI Starkville network connection from 10MB line to 40MB.
- Reduced inventory of salvage and surplus property by taking 68 computers to surplus property, and recycling 120 old printer components.
- Created the Mississippi Farmers Markets invoicing system within the agency Intranet (AgNet).
- Replaced plotter printer with new HP Z9 capable of printing 44” posters with the ability to automatically trim excess paper during print.
- Added new Comcast line to the Education Building at the Museum.
- Implemented Gallery Server – multimedia library management tool for AgNet to organize photos and video for MDAC within the agency Intranet.
- Received Federal Aviation Administration instant authorization capabilities for drone flight in all airspaces participating in the system and also received manual authorizations for Hawkins and Meridian airspace. Drone program was also granted night flight authority in Jackson and Hawkins airspace and all Class G airspace.
- Developed new websites for the Hemp Task Force, Produce Safety, County Correspondents, and Forestry Products.
- Developed new Regulatory database reports including year-end reports for consumer protection, store inspection report, active stores and active devices per county/store, UPC inspection, package checking for sanitation inspection, monthly report for businesses, catfish and shrimp inspection, petroleum division reports, petroleum special reports for public records requests, nozzle inventory reports and Geospatial (GIS) USDA GAP/GHP Food safety Audit reports.
- Provided public wireless access on fairgrounds for campers utilizing AT&T Cradlepoint technology.
- Created AgNet Intranet application for the Farmer’s Market Nutrition Program for WIC employees to track distribution of checks.
- Joined the Mississippi Email Filter working group and attended meetings to participate in planning for cloud based email filtering for the state.
- Implemented MDAC Password Expiration email notification system to cut down on expired password and computer lock out issues.
- Migrated Marketing databases from SQL 2008 to SQL 2016.

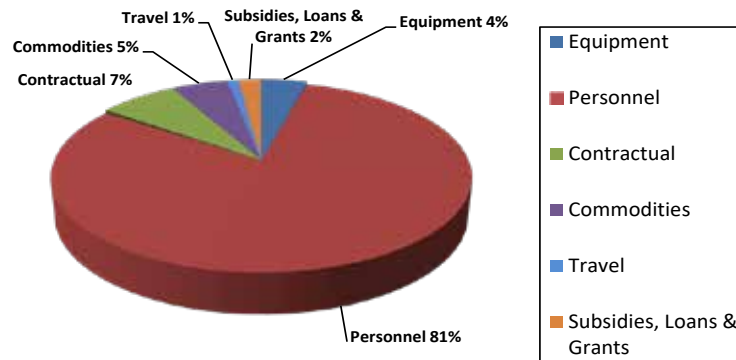
DIRECTOR

JASON PRICE

JasonP@mdac.ms.gov

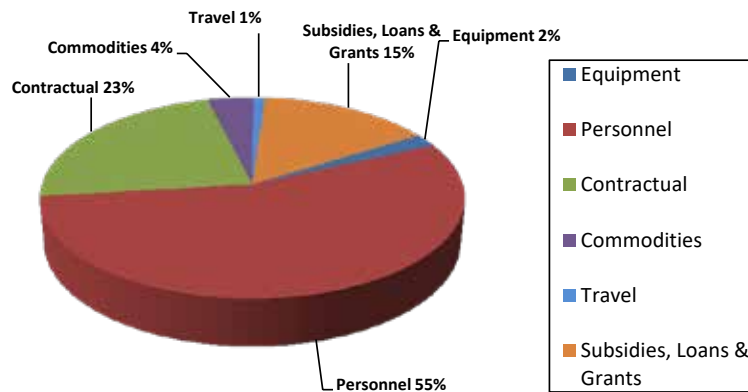
REVENUES & EXPENDITURES

GENERAL FUNDS ONLY



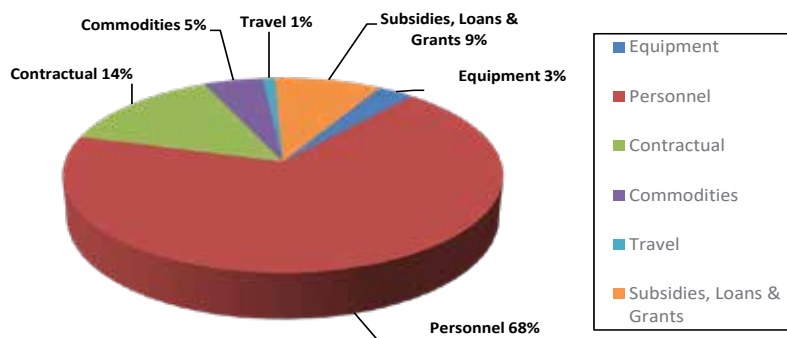
Total Revenues \$6,751,504
Total Expenditures \$6,751,504

SPECIAL FUNDS ONLY



Total Revenues \$9,234,749
Total Expenditures \$6,623,938

GENERAL & SPECIAL FUNDS



Total Revenues \$15,986,253
Total Expenditures \$13,375,442