

Agriculture Fact Sheet

Aquaculture 2022



Catfish in Mississippi

- Mississippi ranks #1 in the United States for farm raised-catfish production, producing more than 65 percent of the nation's farm-raised catfish.
- In 2022, Mississippi had 205 catfish operations covering 34,100 water acres.
- The production value of catfish in 2022 was \$258 million.
- The typical annual production of catfish per acre is 5,000 pounds.

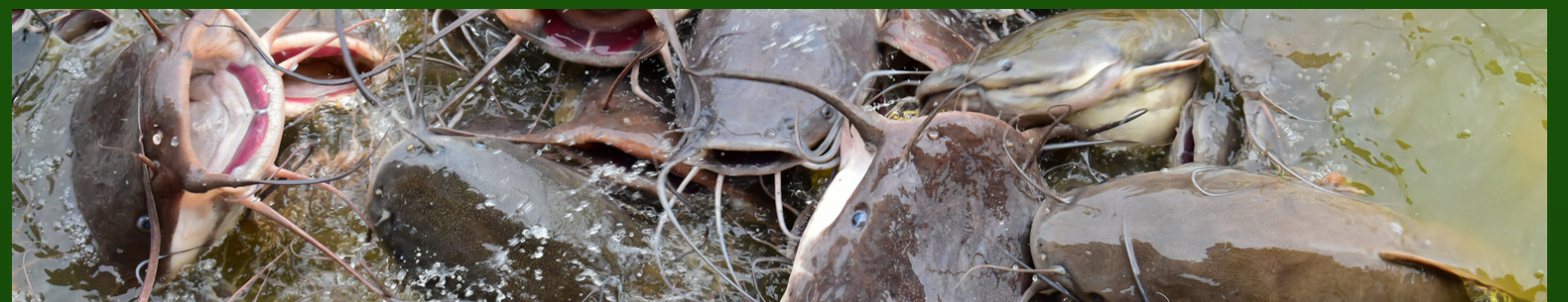
Freshwater Shrimp (Prawns)

- Freshwater shrimp, known as prawns, are classified as a non-native species.
- Like all other crustaceans, prawns have a hard-outer shell.
- The average farm stocking rates are 12,000 to 16,000 prawns per acre.
- The grow-out period for these shrimp ranges from 120 to 150 days in central Mississippi.
- The typical annual production of shrimp per acres ranges from 500 to 1,000 pounds.
- The average count per pound (live weight) is 12.5 to 16 shrimp.



Gamefish

- There are approximately 20 gamefish producers in Mississippi.
- This area of aquaculture has an expanding future with the growing number of free fishing ponds and managed lakes.



Source: Mississippi State University & USDA-NASS

MISSISSIPPI DEPARTMENT OF
**AGRICULTURE
& COMMERCE**

Mississippi Department of Agriculture and Commerce
Andy Gipson, Commissioner
Phone (601) 359-1100 · www.mdac.ms.gov